



*Van der Graaf*

**Power Transmission Equipment**

**België**

Motoren Desmedt nv

Moerelei 145

B-2610 Wilrijk

Tel : 0032 (3) 830.09.90

Fax : 0032 (3) 828.78.90

Email : [info@motorendesmedt.be](mailto:info@motorendesmedt.be)

# TM 113B25

| Type<br>TM 113B25- | Power<br>kW | Beltspeed m/s at 50 Hz<br>Beltpull N |       |       |       |       |       |       |       |      |       | Min<br>L mm | Full load Curr.<br>400 v - 50 Hz<br>I = ...A | Weight<br>kg<br>L = 310 |
|--------------------|-------------|--------------------------------------|-------|-------|-------|-------|-------|-------|-------|------|-------|-------------|--|-------------------------|
| 205 Z              | 0,37        | 4,4                                  | 4     | 3,2   | 2,8   | 2,5   |       |       |       |      |       | 310         | 0,8  | 16                      |
|                    |             | 80                                   | 90    | 110   | 125   | 140   |       |       |       |      |       |             |  |                         |
| 405 Z              | 0,37        | 2,2                                  | 2     | 1,6   | 1,4   | 1,25  | 1,1   | 0,95  | 0,75  | 0,6  |       | 360         | 1,35   | 16                      |
|                    |             | 160                                  | 175   | 220   | 250   | 280   | 320   | 370   | 470   | 585  |       |             |  |                         |
| 405 PL2            |             | 0,85                                 | 0,7   | 0,65  | 0,55  | 0,5   | 0,45  | 0,4   | 0,34  | 0,27 |       | 360         |  |                         |
|                    |             | 400                                  | 485   | 525   | 620   | 680   | 755   | 850   | 1000  | 1150 |       |             |  |                         |
| 234 Z              | 0,25        | 4,4                                  | 4     | 3,2   | 2,8   | 2,5   |       |       |       |      |       | 260         | 0,65   | 16                      |
|                    |             | 55                                   | 60    | 75    | 85    | 95    |       |       |       |      |       |             |  |                         |
| 434 Z              | 0,25        | 2,2                                  | 2     | 1,6   | 1,4   | 1,25  | 1,1   | 0,95  |       |      |       | 310         | 0,7  | 16                      |
|                    |             | 110                                  | 120   | 150   | 170   | 190   | 215   | 250   |       |      |       |             |  |                         |
| 434 PL2            |             | 0,85                                 | 0,75  | 0,7   | 0,65  | 0,55  | 0,5   | 0,45  | 0,4   | 0,34 | 0,27  | 310         |  |                         |
|                    |             | 270                                  | 305   | 330   | 355   | 420   | 460   | 510   | 575   | 675  | 850   |             |  |                         |
| 634 Z              | 0,25        | 1                                    | 0,9   | 0,8   | 0,7   | 0,6   | 0,5   | 0,4   |       |      |       | 360         | 0,95   | 16                      |
|                    |             | 240                                  | 265   | 295   | 340   | 395   | 475   | 595   |       |      |       |             |  |                         |
| 634 PL2            |             | 0,29                                 | 0,25  | 0,21  | 0,17  |       |       |       |       |      |       | 360         |  |                         |
|                    |             | 795                                  | 920   | 1095  | 1150  |       |       |       |       |      |       |             |  |                         |
| 425 Z              | 0,18        | 1,6                                  | 1,4   | 1,25  | 1,1   | 0,95  |       |       |       |      |       | 275         | 0,55   | 16                      |
|                    |             | 105                                  | 120   | 135   | 155   | 180   |       |       |       |      |       |             |  |                         |
| 425 PL2            |             | 0,85                                 | 0,75  | 0,7   | 0,65  | 0,55  | 0,5   | 0,45  | 0,4   | 0,34 | 0,27  | 275         |  |                         |
|                    |             | 195                                  | 220   | 235   | 255   | 300   | 330   | 370   | 415   | 485  | 615   |             |  |                         |
| 425 PL3            |             | 0,2                                  | 0,18  | 0,16  | 0,13  | 0,11  |       |       |       |      |       | 310         |  |                         |
|                    |             | 790                                  | 880   | 990   | 1150  | 1150  |       |       |       |      |       |             |  |                         |
| 625 Z              | 0,18        | 0,9                                  | 0,8   | 0,7   | 0,6   |       |       |       |       |      |       | 310         | 0,65   | 16                      |
|                    |             | 190                                  | 214   | 244   | 285   |       |       |       |       |      |       |             |  |                         |
| 625 PL2            |             | 0,25                                 | 0,21  | 0,17  |       |       |       |       |       |      |       | 310         |  |                         |
|                    |             | 660                                  | 790   | 975   |       |       |       |       |       |      |       |             |  |                         |
| 416 Z              | 0,12        | 1,1                                  | 0,95  |       |       |       |       |       |       |      |       | 260         | 0,4  | 16                      |
|                    |             | 105                                  | 120   |       |       |       |       |       |       |      |       |             |  |                         |
| 416 PL2            |             | 0,85                                 | 0,75  | 0,7   | 0,65  | 0,55  | 0,5   | 0,45  | 0,4   | 0,34 | 0,27  | 260         |  |                         |
|                    |             | 130                                  | 145   | 160   | 170   | 200   | 220   | 245   | 275   | 325  | 410   |             |  |                         |
| 416 PL3            |             | 0,18                                 | 0,11  | 0,07  |       |       |       |       |       |      |       | 310         |  |                         |
|                    |             | 585                                  | 960   | 1150  |       |       |       |       |       |      |       |             |  |                         |
| 816 PL2            | 0,12        | 0,31                                 | 0,22  | 0,2   | 0,16  | 0,13  |       |       |       |      |       | 310         | 0,65   | 16                      |
|                    |             | 355                                  | 500   | 550   | 690   | 850   |       |       |       |      |       |             |  |                         |
| 816 PL3            |             | 0,1                                  | 0,08  |       |       |       |       |       |       |      |       | 360         |  |                         |
|                    |             | 1055                                 | 1150  |       |       |       |       |       |       |      |       |             |  |                         |
| 811 PL2            | 0,08        | 0,31                                 | 0,26  | 0,22  | 0,2   | 0,16  | 0,13  |       |       |      |       | 260         | 0,45   | 16                      |
|                    |             | 235                                  | 285   | 335   | 370   | 460   | 565   |       |       |      |       |             |  |                         |
| 811 PL3            |             | 0,1                                  | 0,08  | 0,07  | 0,06  | 0,05  |       |       |       |      |       | 310         |  |                         |
|                    |             | 705                                  | 880   | 1005  | 1150  | 1150  |       |       |       |      |       |             |  |                         |
| 807 PL3            | 0,05        | 0,06                                 | 0,05  | 0,033 |       |       |       |       |       |      |       | 310         | 0,3  | 16                      |
|                    |             | 735                                  | 880   | 1150  |       |       |       |       |       |      |       |             |  |                         |
| 807 PL4            |             | 0,025                                | 0,023 | 0,021 | 0,019 | 0,016 | 0,015 | 0,013 | 0,012 | 0,01 | 0,008 | 360         |  |                         |
|                    |             | 1150                                 | 1150  | 1150  | 1150  | 1150  | 1150  | 1150  | 1150  | 1150 | 1150  |             |  |                         |
| 805 PL3            | 0,04        | 0,1                                  | 0,08  | 0,07  | 0,06  | 0,05  | 0,033 |       |       |      |       | 285         | 0,25   | 16                      |
|                    |             | 350                                  | 440   | 505   | 585   | 705   | 1065  |       |       |      |       |             |  |                         |

Available standard facewidth's

260 - 275 - 310 - 360 - 410 - 460 - 510 - 560 - 610 - 660 - 710 - 760 - 810 - 860 mm

The total weight of a drummotor grows approx. 1,8 kg per 100 mm.

Other beltspeeds and facewidth's upon request.

Available upon request : single phase 220 V - 50 Hz motors.

When an electro-mechanical brake is fitted, the minimum facewidth is increased by 75 mm.

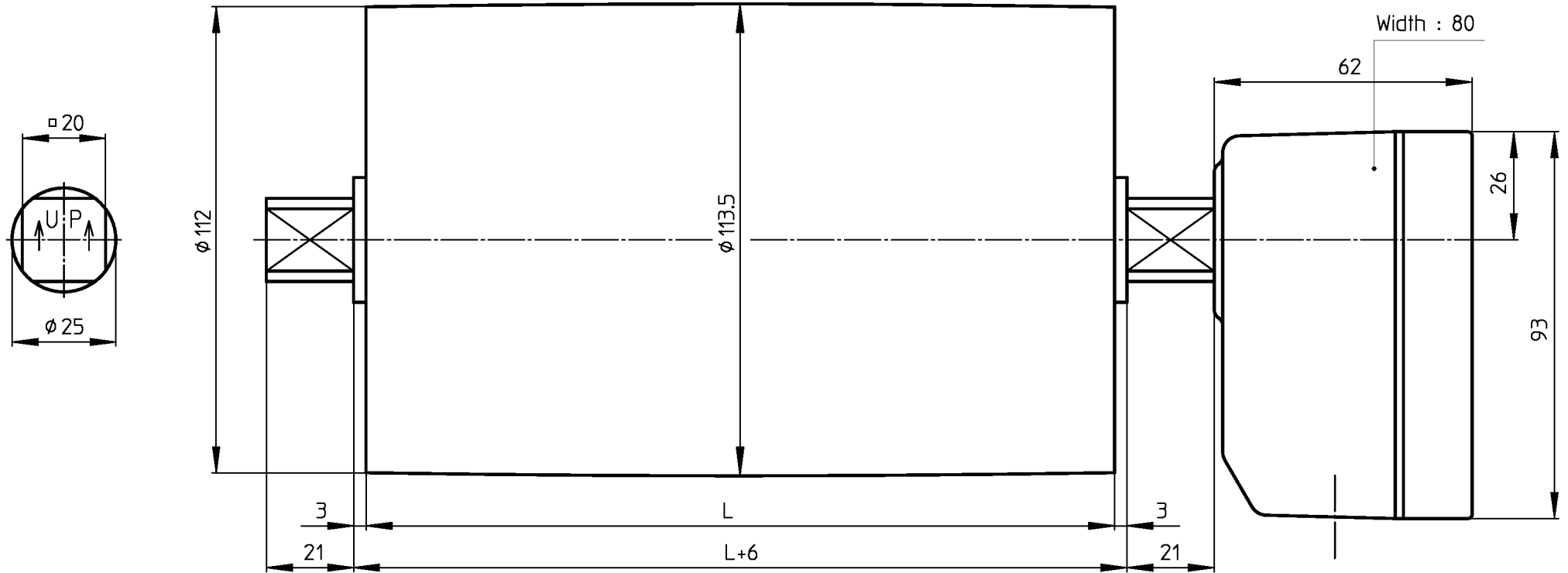
All these drummotors are also available in Stainless Steel - 316

Available torque  $\frac{\text{Beltpull N} \times \text{Drum diameter m}}{2}$  (max 65 Nm)

**Beltpull max.:** 1150 N (I max upon request or nameplate)

# TM113B25

Design B



MS\_TM113B25\_KKKU

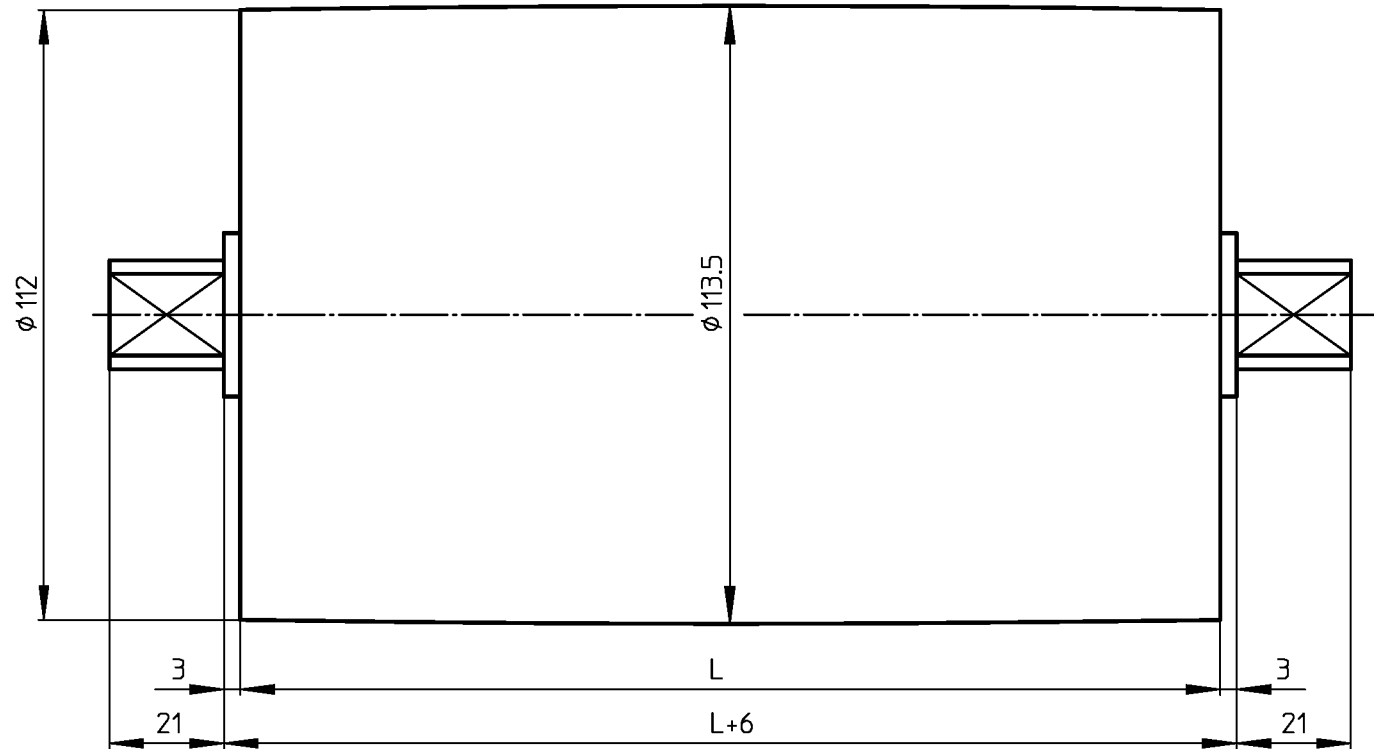
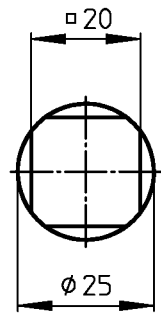
22-10-2004



VAN DER GRAAF B.V.

KT113B25

Design B

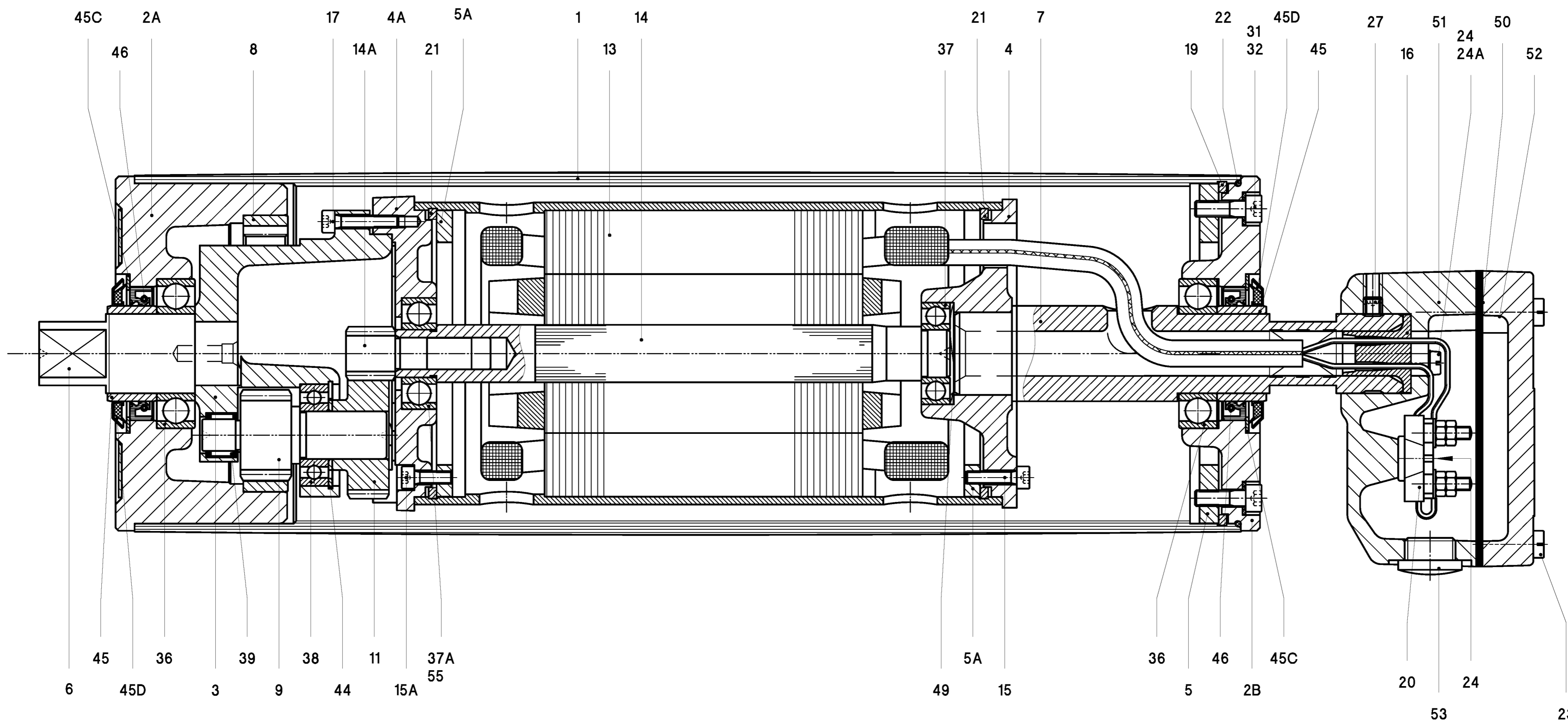


MS\_KT113B25

23-06-2000

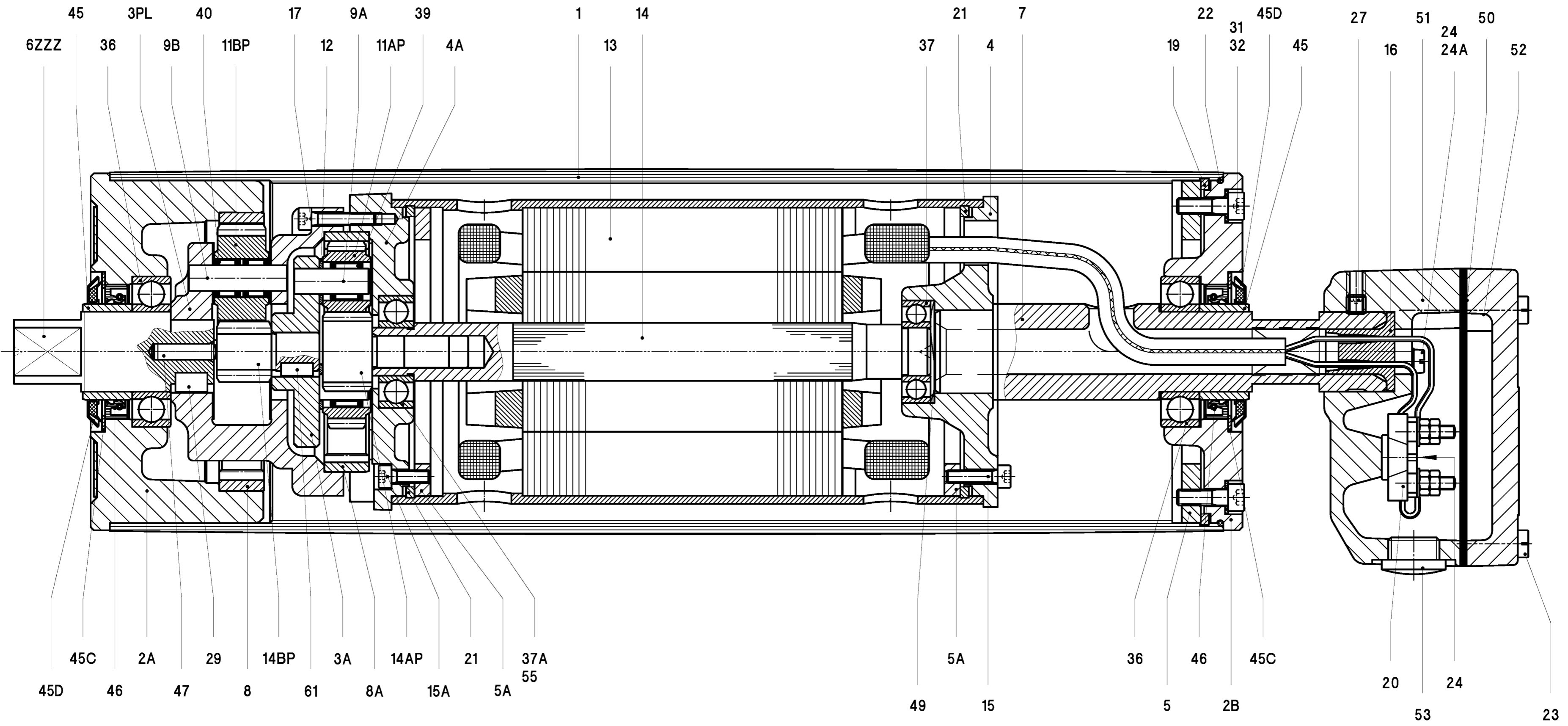


VAN DER GRAAF B.V.



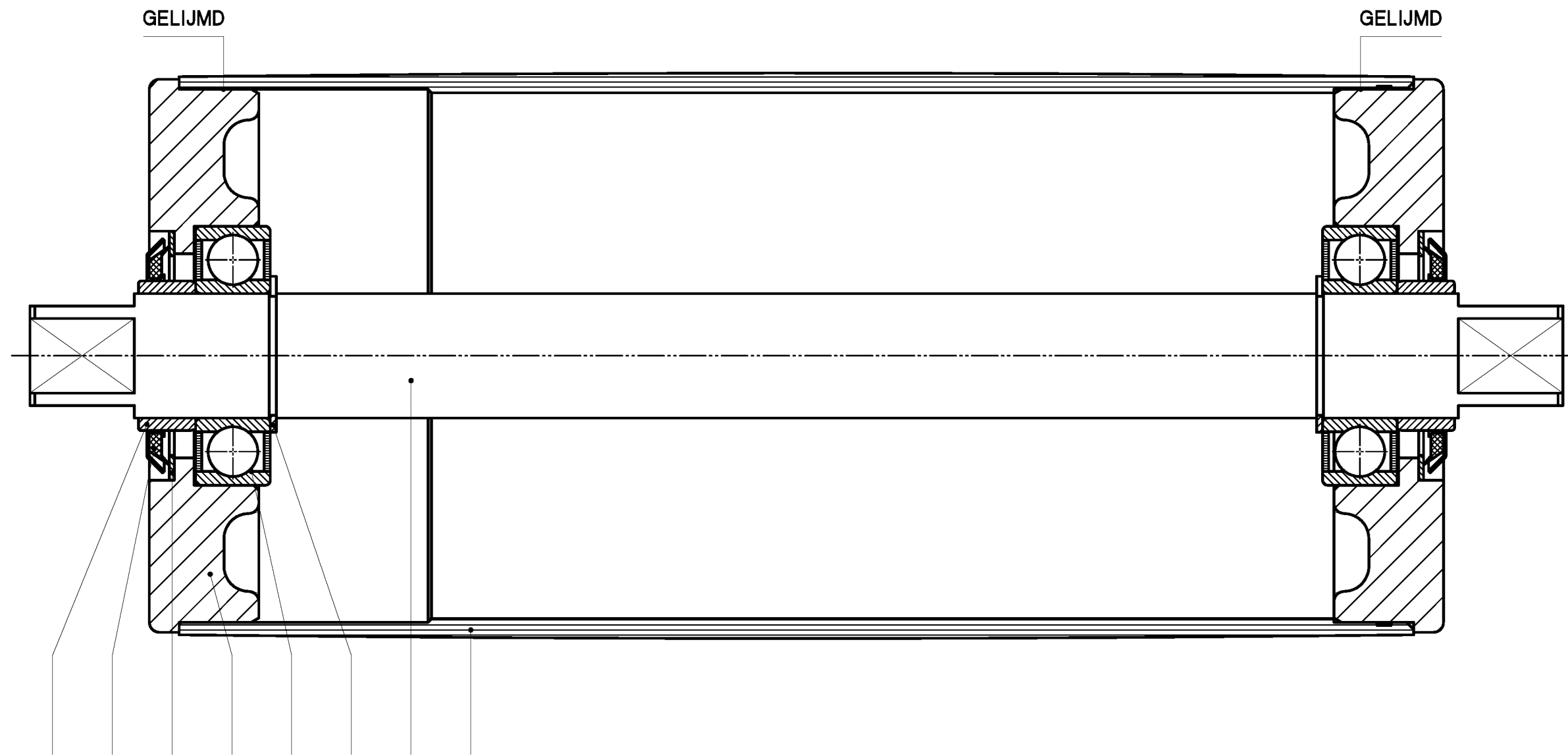
- |                  |                     |                    |                  |                               |
|------------------|---------------------|--------------------|------------------|-------------------------------|
| 1 Shell          | 8 Internal gear     | 19 Springring      | 36 Ballbearing   | 49 Wave washer                |
| 2 A Endflange    | 9 Pinion            | 20 Terminalboard   | 37 Ballbearing   | 50 Seal                       |
| 2 B Endflange    | 11 Gear             | 21 Springring      | 37 A Ballbearing | 51 Junctionbox                |
| 3 Gearinghousing | 13 Stator           | 22 O-ring          | 38 Ballbearing   | 52 Junctionbox cover          |
| 4 Motorflange    | 14 Rotor            | 23 Cyl. Head screw | 39 Needlebearing | 53 Blindstop                  |
| 4 A Motorflange  | 14 A Insert pinion  | 24 Cyl. Head screw | 44 Circlip       | 55 Ballbearing incl. backstop |
| 5 Mountingring   | 15 Int. Hex screw   | 24 A Star washer   | 45 Bearing race  | 57 Dataplate                  |
| 5 A Mountingring | 15 A Int. Hex screw | 27 Setscrew        | 45 C Shim plated |                               |
| 6 Shaftend       | 16 Cable passage    | 31 Int. Hex screw  | 45 D Gammaring   |                               |
| 7 Hollow Shaft   | 17 Int. Hex screw   | 32 Bonded seal     | 46 Oilseal       |                               |

|   |              |   |  |                          |     |
|---|--------------|---|--|--------------------------|-----|
|   |              | ~ onbewerkt<br>▽ ruw bewerkt<br>▽ glad bewerkt<br>▽▽ fijn bewerkt<br>▽▽▽ geslepen<br>▽▽▽▽ gehoond<br>▽▽▽▽▽ gelapt |  | Amerikaanse<br>Projectie |     |
|   |              | Schaal: 1 : 1   |  | Datum                    |     |
|   |              | Getekend: G.R.  |  | 18-10-04                 |     |
|   |              | Gec.:   |  | Gezien:                  |     |
| Wijz.   | Omschrijving | Dat.  | Par.                                     | B.V.                     | BS: |
| Materiaal:  |              | Benaming: <b>DRUMMOTOR</b>  |  |                          |     |
|   |              | COAXIAAL  |  |                          |     |
| <b>VAN DER GRAAF B.V.</b>   |              | Formaat<br><b>A2</b>  | Tekeningnr.<br><b>TM113B25_00_Z_KKKU</b> |                          |     |
| <small>Deze tekening is eigendom van VAN DER GRAAF B.V. Iedere vervreemding, vernieuwing en openbaarmaking aan derden is strafbaar.</small> |              |   |  |                          |     |



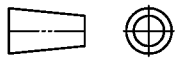

- |                        |                      |                     |                   |                               |
|------------------------|----------------------|---------------------|-------------------|-------------------------------|
| 1 Shell                | 8 Internal gear      | 15 Int. Hex screw   | 27 Setscrew       | 45 D Gammaring                |
| 2 A Endflange          | 8 A Internal gear    | 15 A Int. Hex screw | 29 Key            | 46 Oilseal                    |
| 2 B Endflange          | 9 A Cylindrical pin  | 16 Cable passage    | 31 Int. Hex screw | 49 Wave washer                |
| 3 A Planetary carrier  | 9 B Cylindrical pin  | 17 Int. Hex screw   | 32 Bonded seal    | 50 Seal                       |
| 3 PL Planetary housing | 11 AP Planetary gear | 19 Springring       | 36 Ballbearing    | 51 Junctionbox                |
| 4 Motorflange          | 11 BP Planetary gear | 20 Terminalboard    | 37 Ballbearing    | 52 Junctionbox cover          |
| 4 A Motorflange        | 12 Shim              | 21 Springring       | 37 A Ballbearing  | 53 Blindstop                  |
| 5 Mountingring         | 13 Stator            | 22 O-ring           | 39 Needlebearing  | 55 Ballbearing incl. backstop |
| 5 A Mountingring       | 14 Rotor             | 23 Cyl. Head screw  | 40 Needlebearing  | 57 Dataplate                  |
| 6 Shaftend             | 14 AP Insert pinion  | 24 Cyl. Head screw  | 45 Bearing race   |                               |
| 7 Hollow Shaft         | 14 BP Sunwheel       | 24 A Star washer    | 45 C Shim plated  |                               |

|   |                            |  |
|---|----------------------------|--|
| ~ onbewerkt<br>▽ ruw bewerkt<br>▽▽ glad bewerkt<br>▽▽▽ fijn bewerkt<br>▽▽▽▽ geslepen<br>▽▽▽▽▽ gehoond<br>▽▽▽▽▽▽ getapt                            |                            | Amerikaanse Projectie                                  |
| Schaal: 1 : 1   |                            | Datum<br>18-10-04                                      |
| Getekend: G.R.  |                            | Gezien:  |
| Wijz. Omschrijving  | Dat. Par.                  | B.V. BS:   |
| Materiaal:  | Benaming: <b>DRUMMOTOR</b> |  |
| VAN DER GRAAF B.V.  |                            | Formaat Tekeningsnr.<br><b>A2 TM113B25_00_PL2_KKKU</b> |
| <small>Deze tekening is eigendom van VAN DER GRAAF B.V. Iedere vervreemding, vermenigvuldiging en openbaarmaking aan derden is strafbaar.</small> |                            |  |



45 45D 45C 2 4 42 3 1

- 1 Shell
- 2 A Endflange
- 3 Shaft
- 4 Ballbearing
- 42 Circlip
- 45 Bush
- 45 C Shim plated
- 45 D Gammaring

|  |              |   |      |  |  |
|--|--------------|---|------|--|--|
|  |              |   |      | ~ onbewerkt<br>▽ ruw bewerkt<br>▽▽ glad bewerkt<br>▽▽▽ fijn bewerkt<br>▽▽▽ geslepen<br>▽▽▽ gehoond<br>▽▽▽ gelapt | Amerikaanse<br>Projectie <br>MAATTOLERANTIES VOLGENS NEN 2365 |
|  |              |   |      | Schaal: 1 : 1  | Datum  |
|  |              |   |      | Getekend: S.Z.   | 15-04-98   |
|  |              |   |      | Gec.:  | Gezien: 26-11-02   |
| Wijz.  | Omschrijving | Dat.  | Par. | B.V.   | BS:  |
|  | Materiaal:   | Benaming: <b>KEERTROMMEL</b>  |      |  |  |
|  |              |  <b>VAN DER GRAAF B.V.</b> |      | Formaat <b>A3</b><br>Tekeningnr. <b>KT113B25_00</b>  |  |
| <small>Deze tekening is eigendom van VAN DER GRAAF B.V. Iedere verveemding, vermenigvuldiging en openbaarmaking aan derden is strafbaar.</small> |              |   |      |  |  |